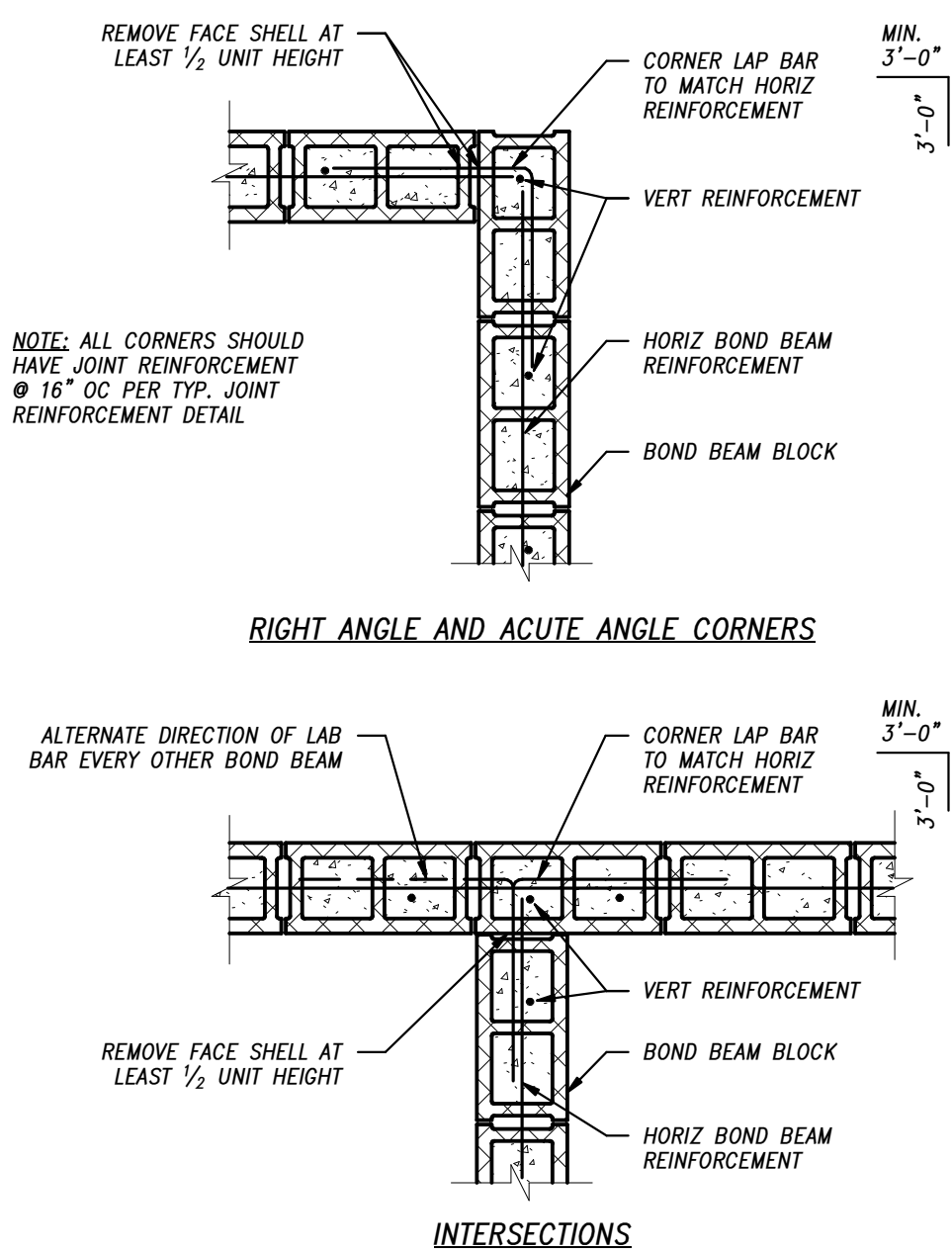


14 ELEVATOR PIT
3/4" = 1'-0"

BAR SIZE	SPLICE OR DEVELOPMENT LENGTH INCHES	DB
#3	1'-2"	37
#4	1'-5"	36
#5	1'-11"	37
#6	3'-4"	53
#7	4'-6"	62
#8	6'-10"	82

- NOTES:
1. LAPS IN REINFORCING BARS IN REINFORCED MASONRY SHALL HAVE MINIMUM LENGTHS DEFINED ABOVE UNLESS SPECIFICALLY NOTED OTHERWISE ON THE DRAWINGS.
 2. ALL SPLICES TO BE WIRED TOGETHER.
 3. SPLICE AND DEVELOPMENT LENGTHS ARE THE SAME VALUE FOR HORIZONTAL AND VERTICAL BARS.
 4. F'm MUST BE GREATER THAN OR EQUAL TO 1,900 PSI.
 5. CLEAR COVER FROM FACE OF BLOCK MUST BE GREATER THAN 3.5".

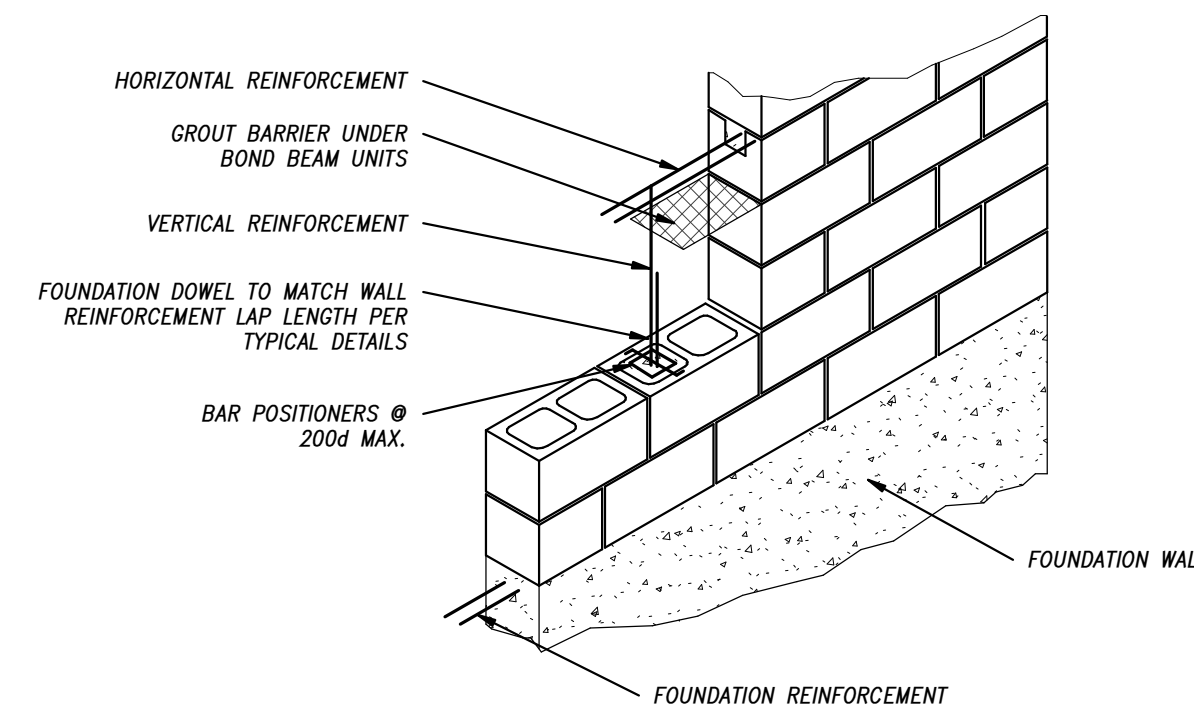
13 TYP MASONRY REINFORCEMENT DEVELOPMENT LENGTHS
1:1



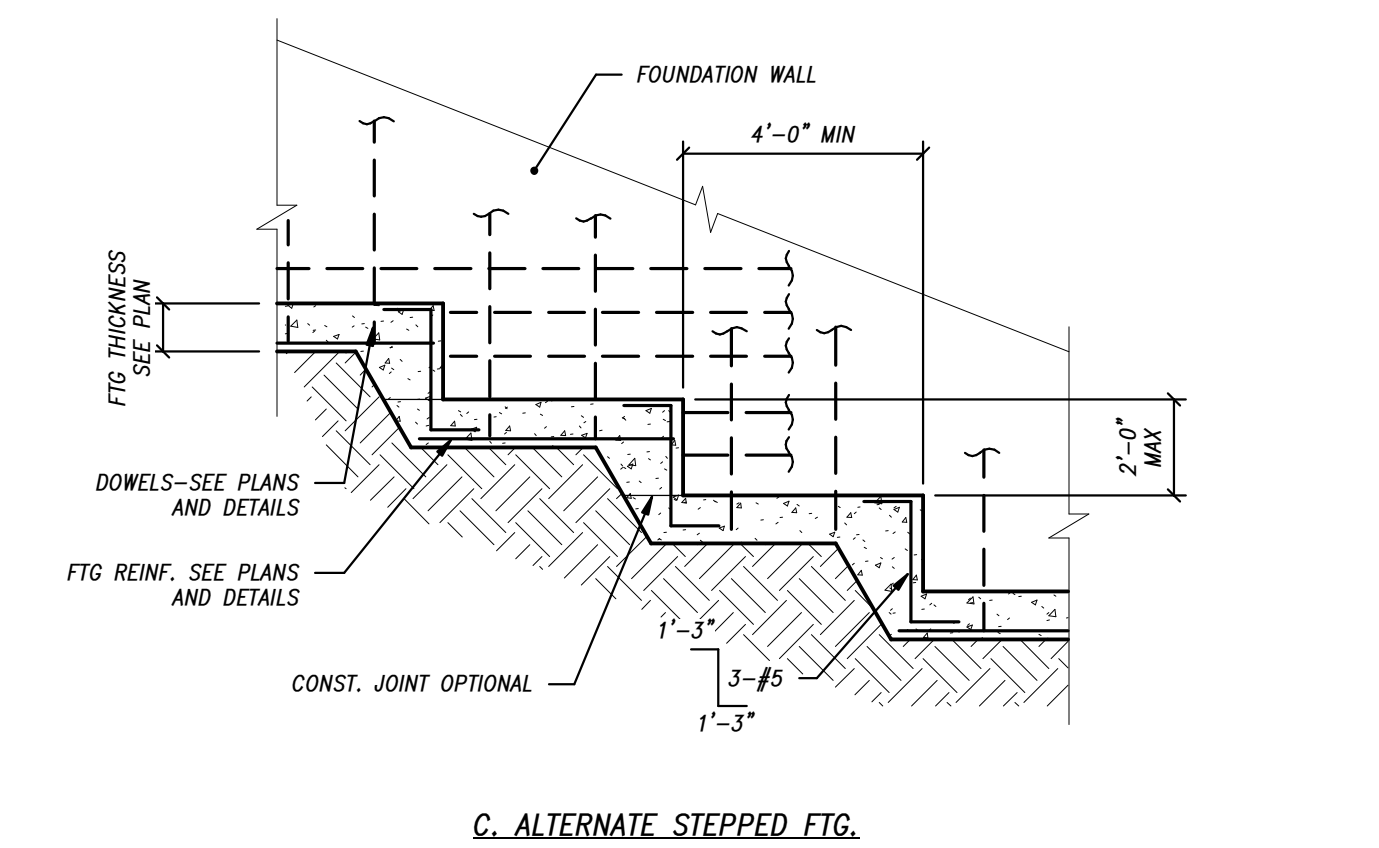
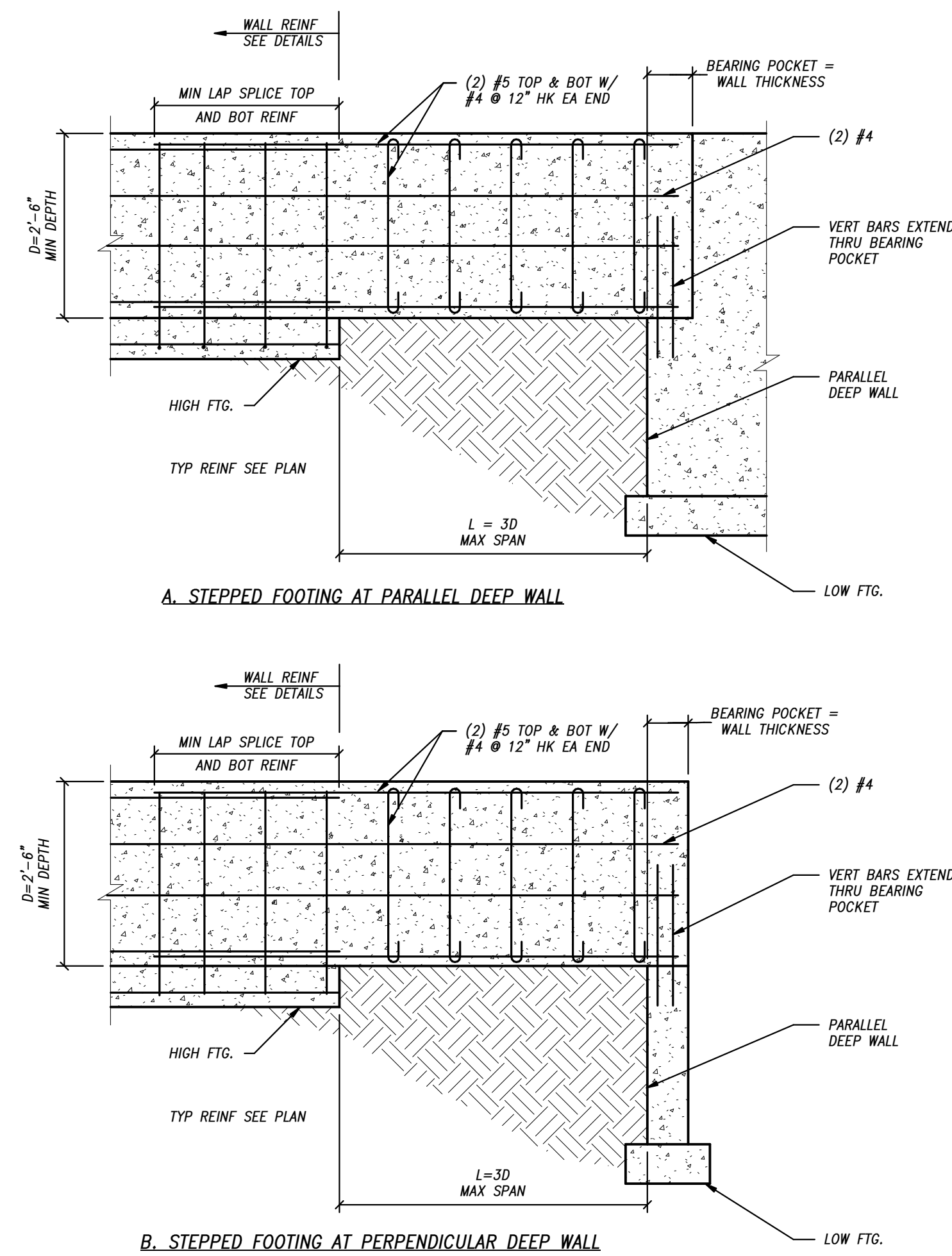
12 TYP CMU HORIZONTAL REINFORCEMENT AT CORNERS
3/4" = 1'-0"

THE STRUCTURAL ENGINEER'S SEAL ON THIS DRAWING INDICATES THAT THE INFORMATION SHOWN AND THE CALCULATIONS PREPARED BY THE ENGINEER HAVE BEEN PREPARED BY QUALIFIED PEOPLE UNDER THE DIRECTION OF THE ENGINEER OF RECORD. THE SEAL DOES NOT IMPLY RESPONSIBILITY FOR INFORMATION PREPARED BY OTHERS NOR FOR ANY INFORMATION NOT SHOWN ON THIS DRAWING AND SUCH RESPONSIBILITY IS SPECIFICALLY DISCLAIMED. ON PHASED PROJECTS, DRAWINGS THAT ARE ISSUED BUT NOT SEALED SHALL BE CONSIDERED TO BE PRELIMINARY IN NATURE AND ARE ISSUED FOR INFORMATION ONLY.

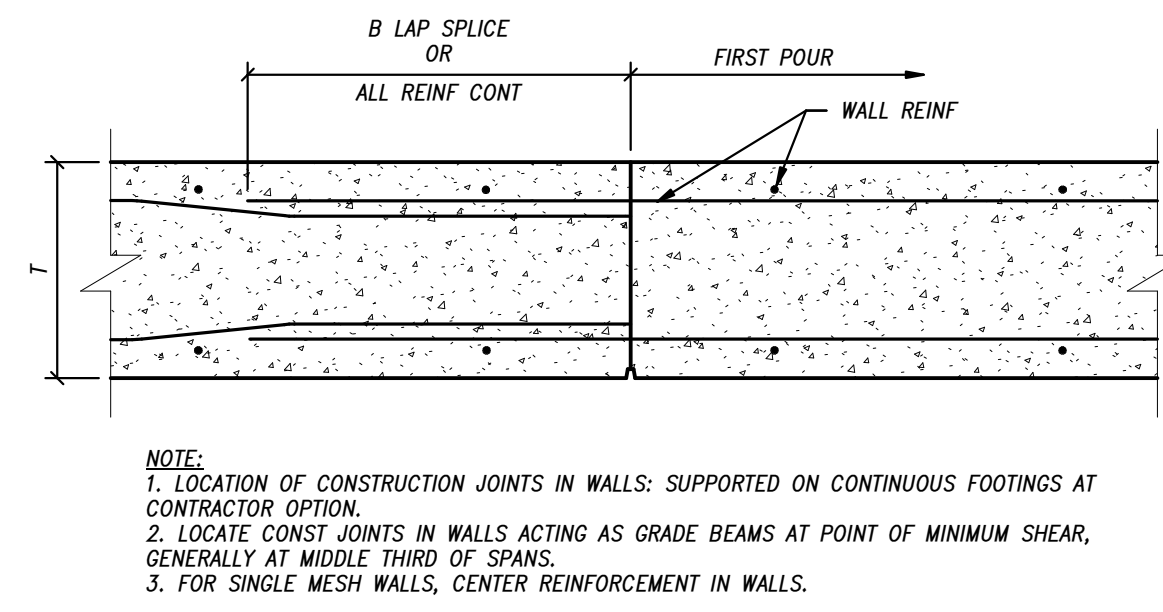
THESE DRAWINGS ARE TO BE USED IN CONJUNCTION WITH THE ARCHITECTURAL DRAWINGS ON THE PROJECT TO CLEARLY DEFINE ALL OF THE REQUIREMENTS FOR THE CONSTRUCTION. WHERE CONFLICTS OCCUR CONTACT ARCHITECT FOR CLARIFICATION.



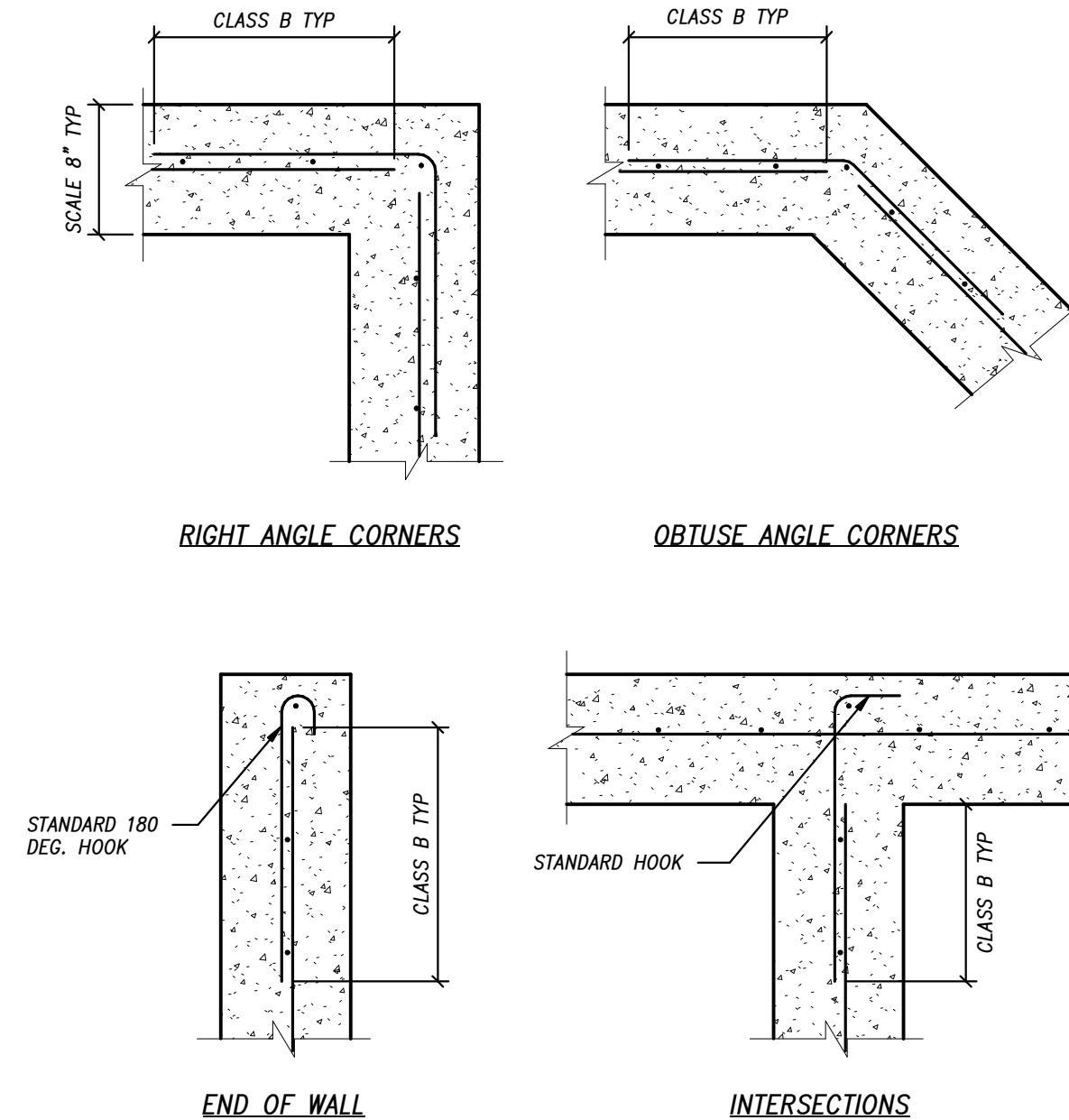
11 TYP PARTIALLY GROUTED CMU WALL
1/2" = 1'-0"



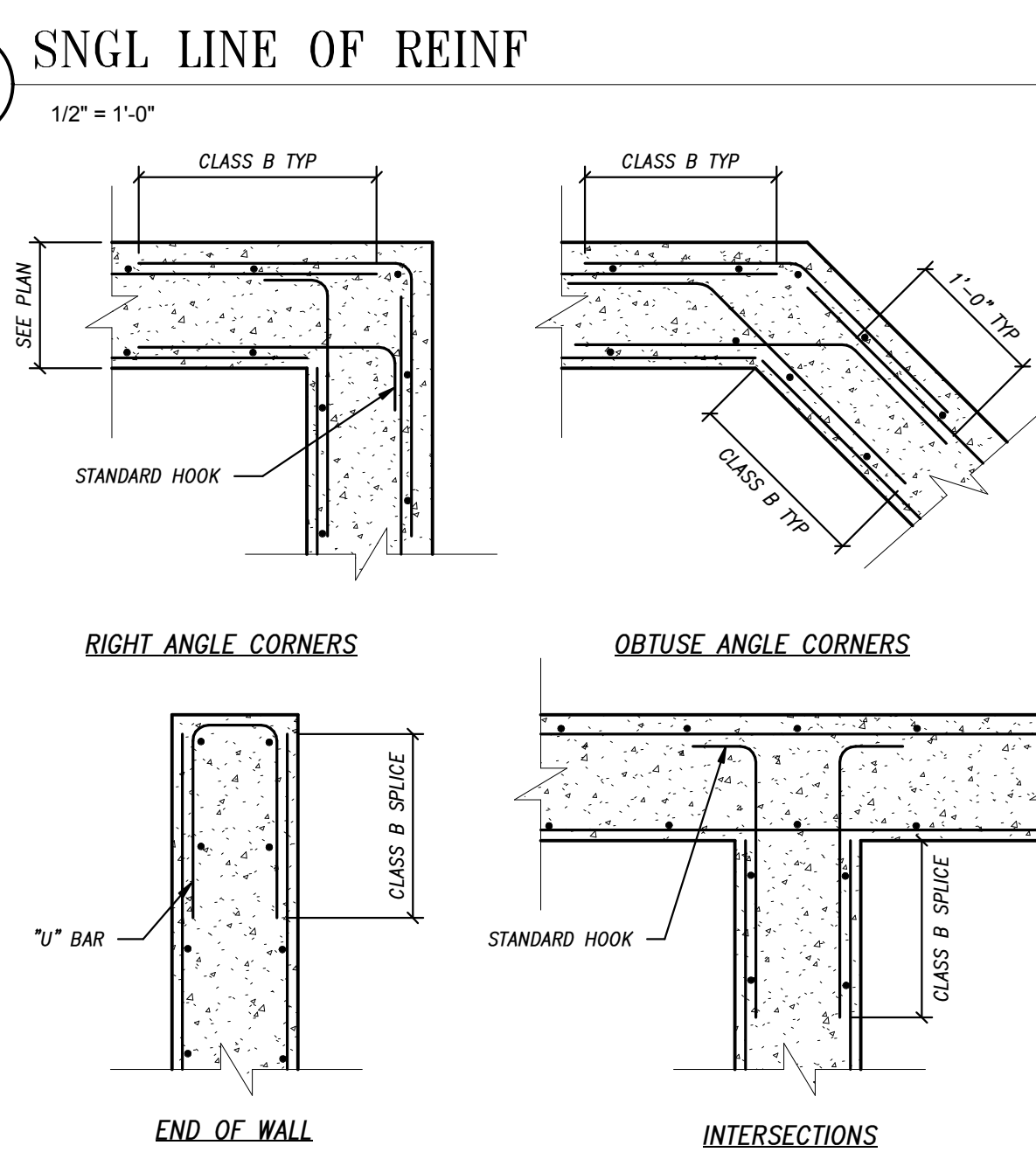
10 TYP FOOTING STEP DTLS
1/2" = 1'-0"



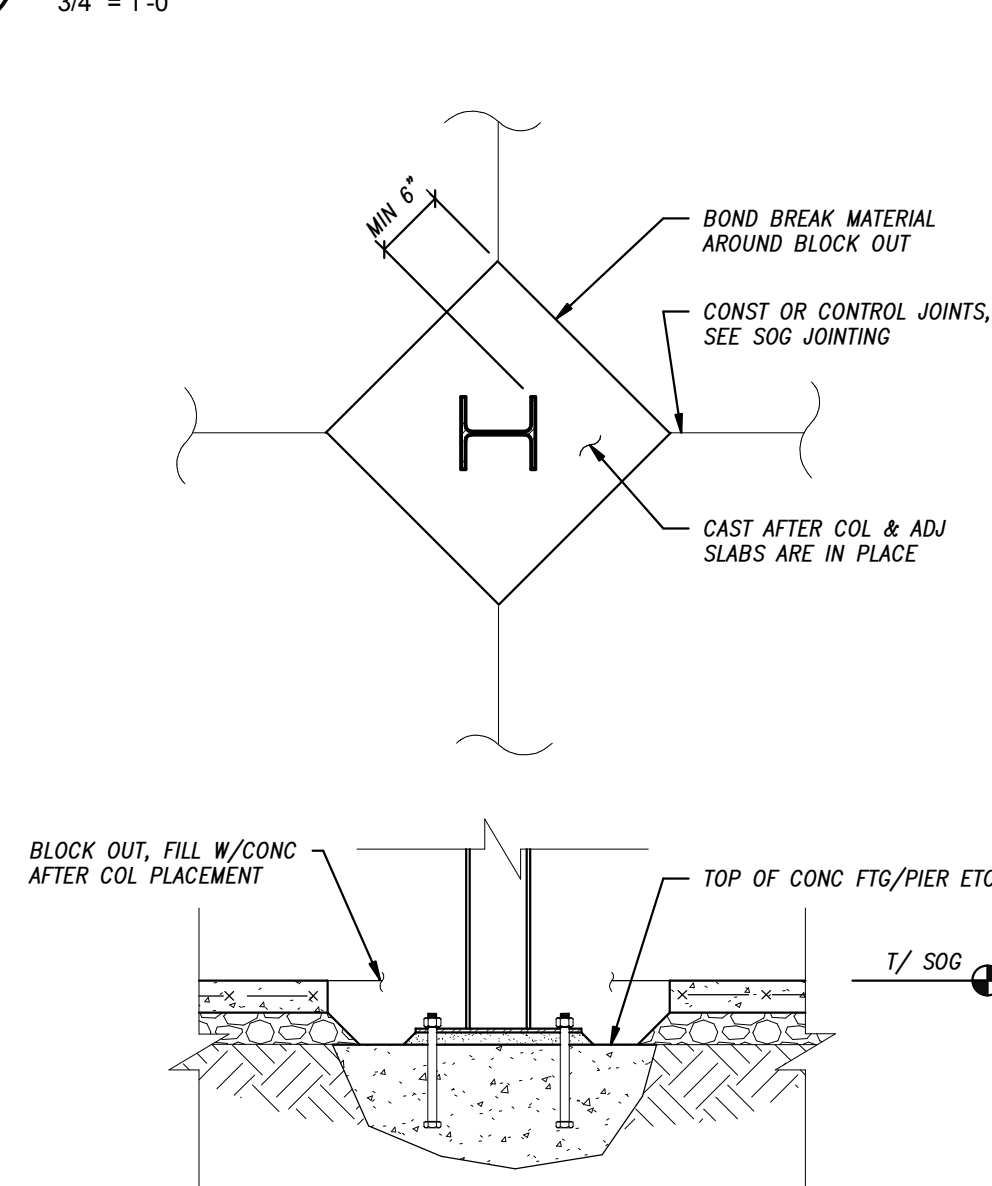
9 TYP WALL CONST. JOINT
3/4" = 1'-0"



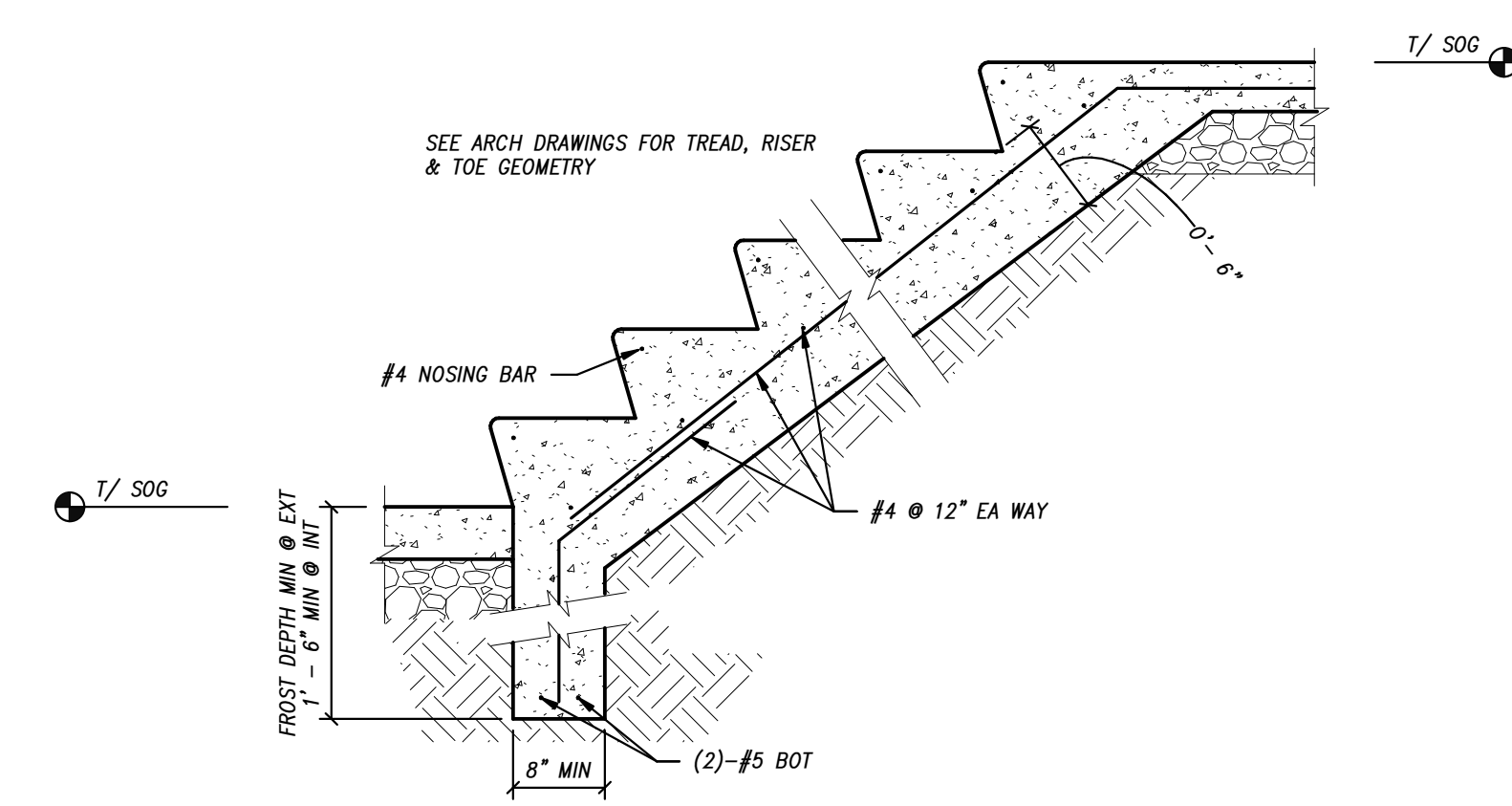
8 TYP WALL & GR BM CORNER REINF - SNGL LINE OF REINF
1/2" = 1'-0"



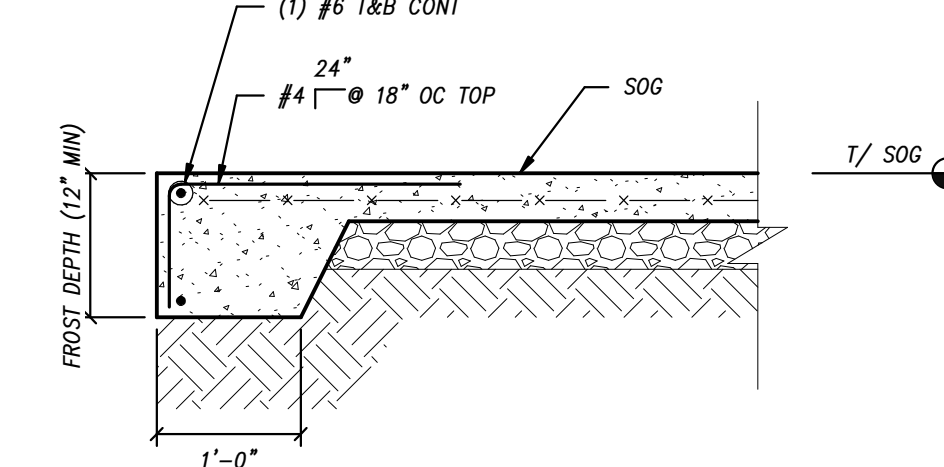
7 TYP WALL & GR BM CORNER REINF - DBL LINE OF REINF
3/4" = 1'-0"



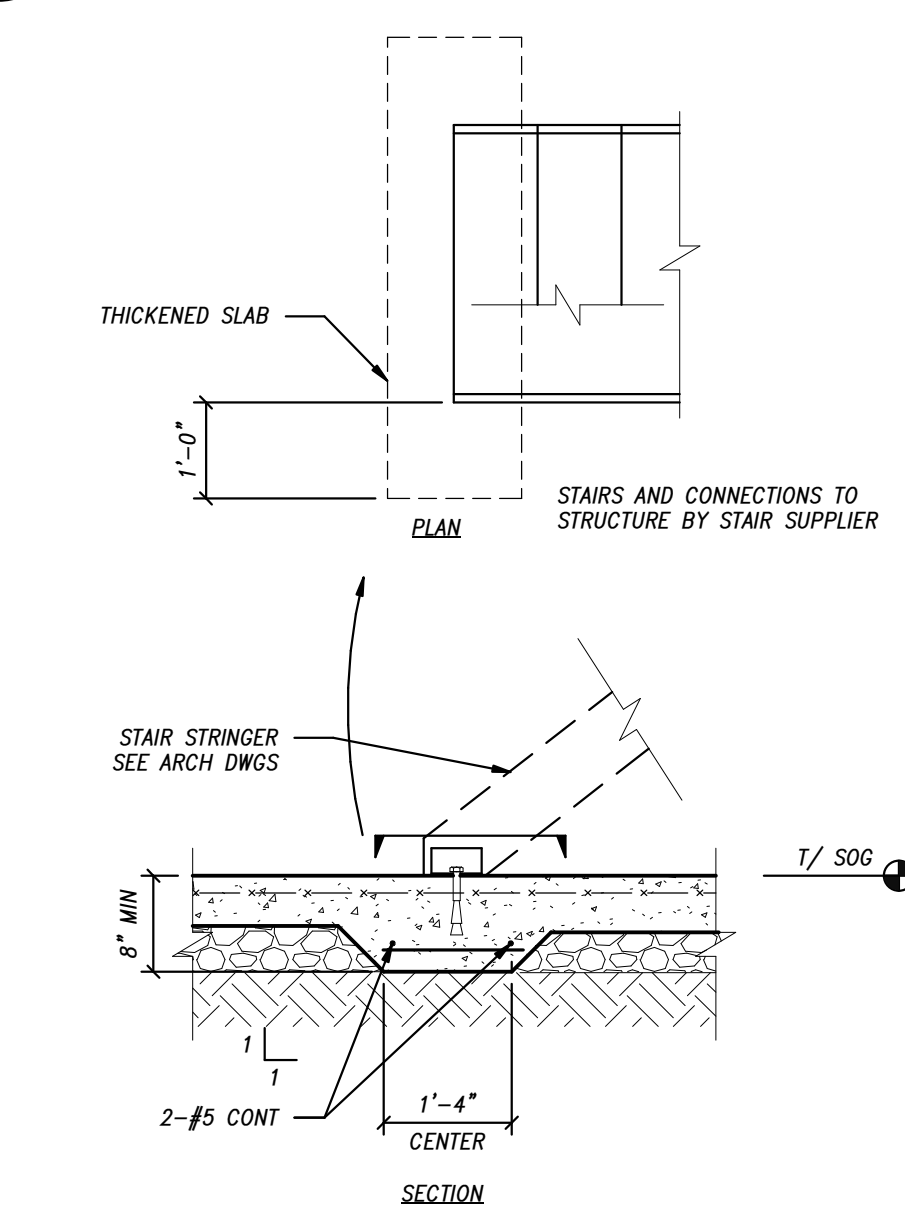
6 TYP BLOCKOUT AT STEEL COLS
3/4" = 1'-0"



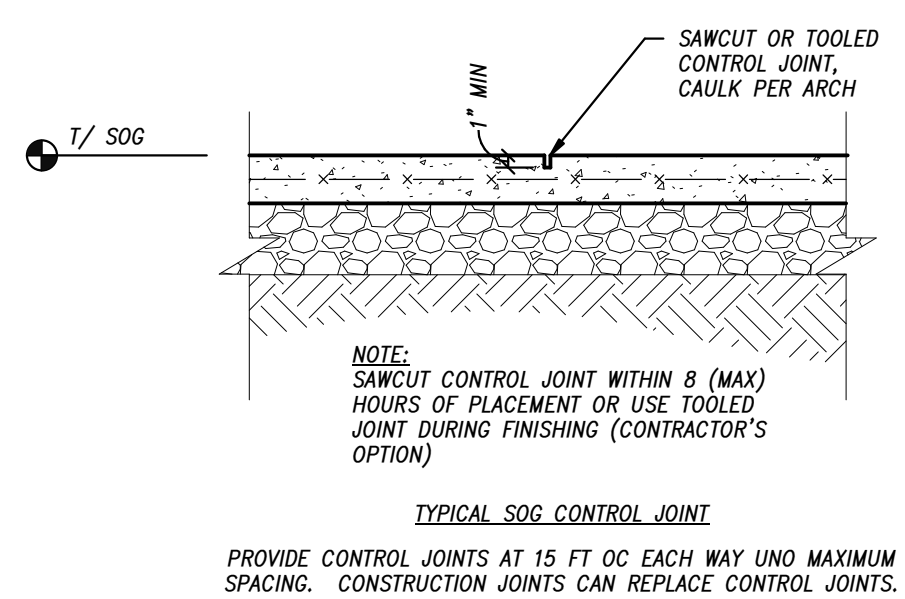
5 TYP SOG STAIR
3/8" = 1'-0"



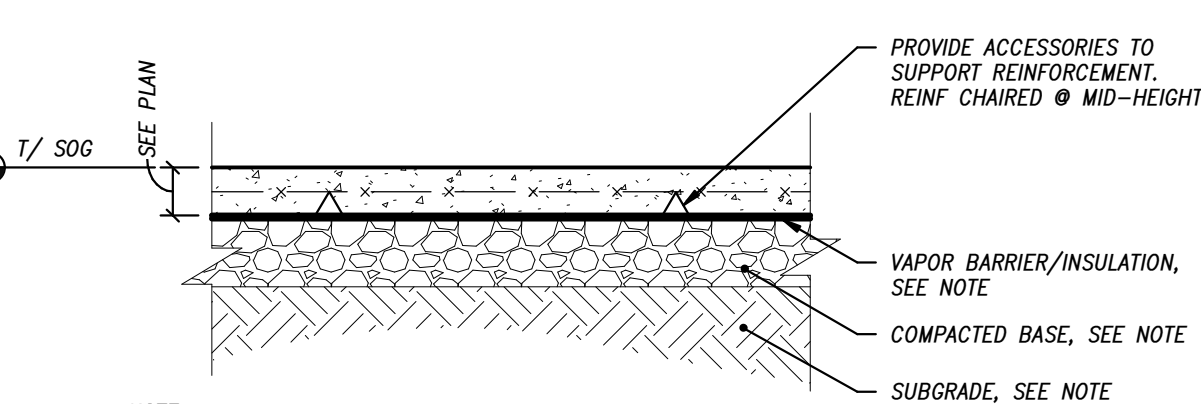
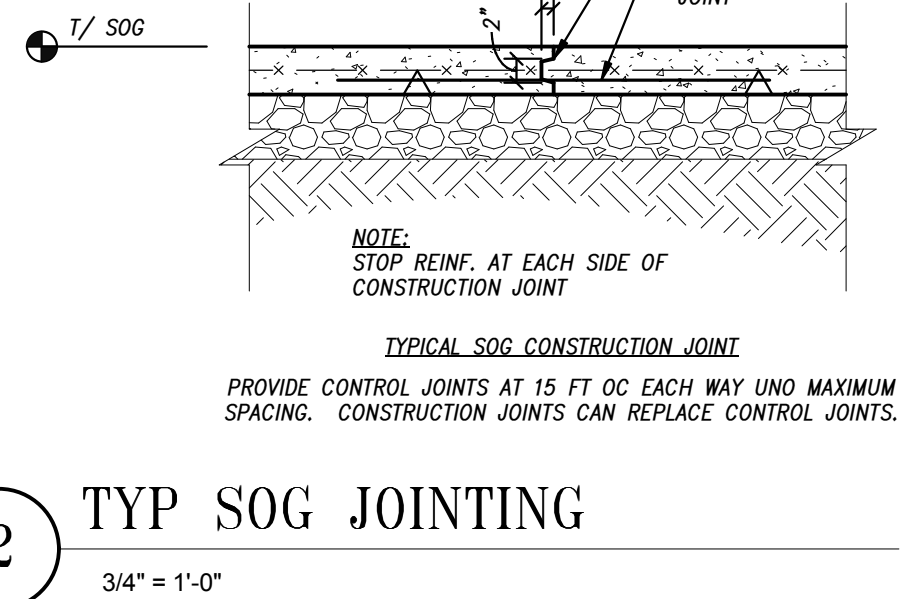
4 TYP SOG TURN DOWN
3/4" = 1'-0"



3 TYP THICKENED SOG AT STAIR
1/2" = 1'-0"



2 TYP SOG JOINTING
3/4" = 1'-0"



- NOTE:
1. RE: ARCH FOR VAPOR BARRIER AND INSULATION REQUIREMENTS. UNDO PER ARCH. PROVIDE VAPOR BARRIER BELOW SLABS WITH FLOOR FINISHES SUSCEPTIBLE TO MOISTURE.
 2. SOG SHALL BEAR ON SUITABLE SUBGRADE MATERIAL AS SPECIFIED PER THE GEOTECHNICAL ENGINEER & GEOTECHNICAL REPORT.
 3. UNDO PROVIDE MIN 4" FREE DRAINAGE COMPACTED BASE TYPICAL UNLESS SPECIFIED OTHERWISE BY GEOTECHNICAL ENGINEER & GEOTECHNICAL REPORT.

1 TYP SOG
3/4" = 1'-0"

REVISIONS	DATE	DESCRIPTION
△	08/17/2012	SUPERSTRUCTURE PERMIT
△	04/24/2013	CLARIFICATIONS AND OWNER REVISIONS
△	05/14/2013	ASI-013

DRAWN BY	DPE/ELR
REVIEWED BY	JCH
DATE	04.24.2013
PROJECT NO.	C0205

DRAWING NAME
TYPICAL DETAILS - CONCRETE AND MASONRY